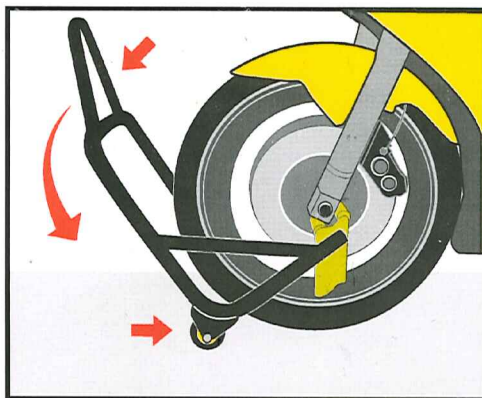


WARNING!

Please read the entire DMP Motorcycle Paddock Stand user manual carefully, failure to follow the instructions in this manual may result in damage of the motorcycle and/or personal injuries.

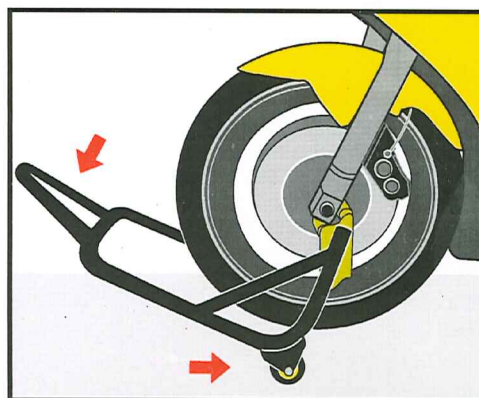
DMP PADDOCKS STANDS comes in two versions: **S.SPEC steel stand** & **R.SPEC aluminum stand**.

- DMP recommends that no person should ever be on the motorcycle while lifted, and to never operate the motorcycle in any way. Do not attempt to do advanced maintenance if you are not qualified. Please seek your local dealership for assistance
- DMP highly recommends to always have another person assisting you when trying to lift the rear or the front of the motorcycle.
- Before using any DMP stands, make sure the surrounding environment is safe with good light source; the floor surface is flat and not slippery or wet. It is recommended to not have any child around when trying to lift and remove the stands.
- In order to use any front stand, a rear stand must be in place prior to perform the front fork or head lift.
- A DMP rear stand can be used with a pair of swingarm spools (can be purchased separately) or on normal conventional motorcycles swingarms that does not have spools.
- If a pair of swingarm spools are installed the universal swingarm saddle adaptors will not be needed.
- If no swing arm spools are installed, the rear stand must have the swingarm saddle adaptors in place in order to lift the swingarm.
- Make sure the swingarm saddles or the pins are not hanging too far out over their receivers, as this will put a lot of stress on the pin, rather than the stand. HUSK at løfte Bag før front, da motorcyklen ellers let kan



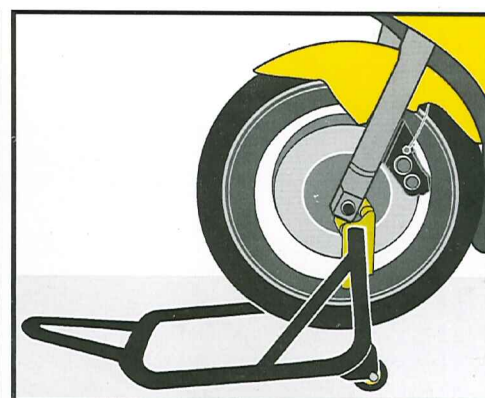
Both the Front fork lift & the Rear swingarm lift function the same way by securing a position under the front fork or the rear swingarm (when lifting rear), then slide the stand forward to lift the bike up.

In this figure the front contact points must be secured in position on the forks before placing downward + forward pressure indicated by the red arrows. The rear must be lifted first already when trying to lift the front.



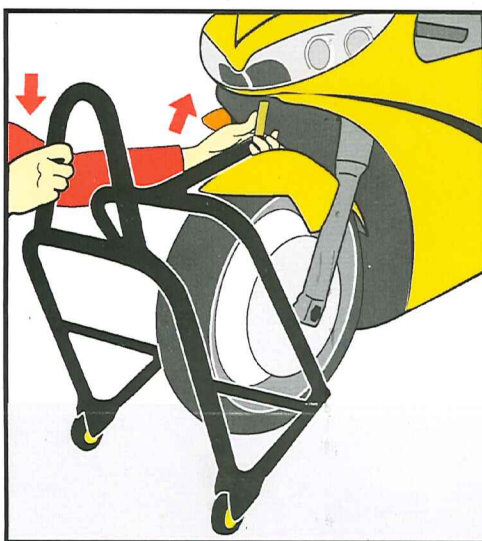
Once the Front fork contact points are secured, push down on the handle while sliding the stand wheels forward in slow motion indicated by the red arrows.

For universal rear swingarm lift, the saddle should be placed closer to the front of the bike in a position where they will not slip back off easily. Make sure the stand will clear the rear fender before you start propping the swingarm.



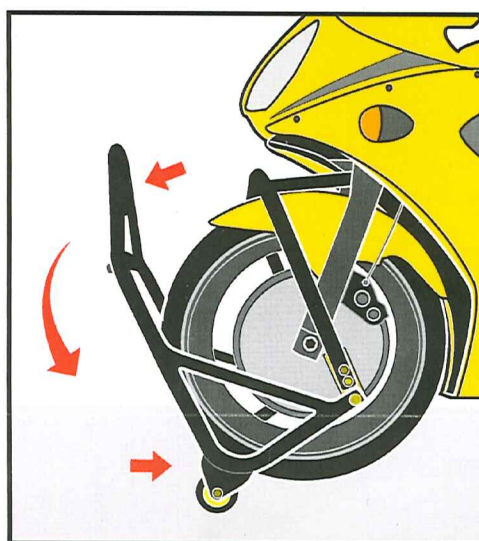
The rubber stoppers on the stands must be touching the floor once the propping motion is completed. Check all contact points and the pins for security before you start conducting any maintenance work.

When ready to remove the bike off the stands, always remove the front first, then the rear. DMP recommends to always have another person assisting you when trying to place the bike on and off the stands.

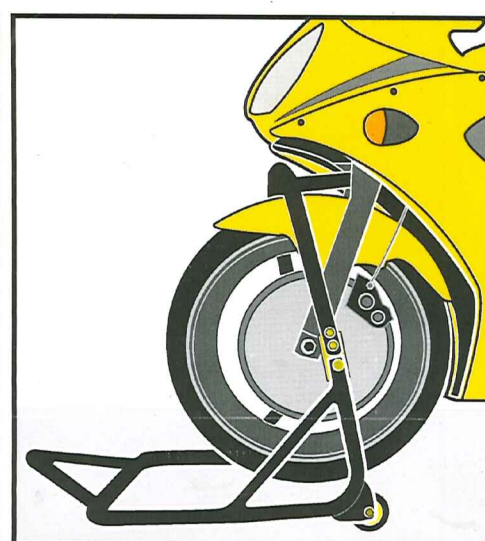


The front HEAD LIFT stand lifts from steering stem of the bike (see figure) to allow front wheel and fork leg removal. The DMP R.SPEC aluminum head lift stand can be easily converted into a front fork lift stand as well (adaptors sold separately). Again, always lift the rear before lifting the front.

The front head lift are sold complete with pin for most bikes. Additional pins sold separately. Please visit our website www.dmp-parts.com for more details.



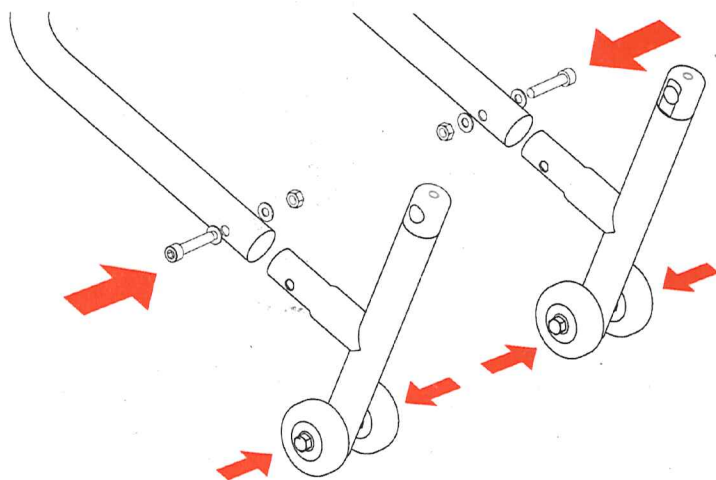
After securing the steering stem with the lift pins and the rear has been lifted, make sure all hardware are tightly secured as well. Then start pushing the handle downward while sliding the wheels forward indicated by the red arrows.



Once the rubber stoppers on the head lift stand has touched the floor, check to make sure the wheels are not moving and the bike is steady in place in the front and the rear. Major maintenance or modification work can now start.

When ready to remove the bike off the stands, always remove the front first, then the rear. DMP recommends to always have another person assisting you when trying to place the bike on and off the stands.

R.SPEC ASSEMBLY GUIDE



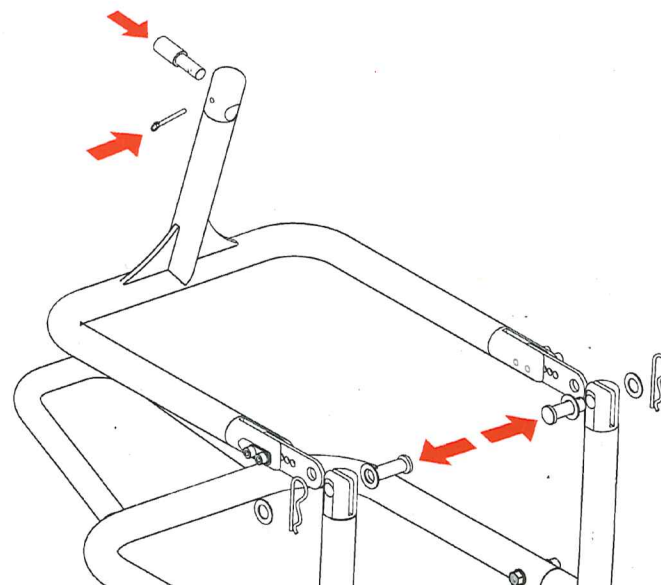
- All R.SPEC Stands will require some basic assembly of wheels and upright legs mounted to the stand base.
- Mount two wheels per leg using one axle bolt each side with washers one per each side.
- Secure with supplied lock nut.
- Secure legs to stands base with supplied button head screw, two washers, per each side and one lock nut per side.
- Before tightening the bolts, place stand on a flat surface to ensure legs are straight with wheels level to the deck. Tighten snug and do not over torque.

R.SPEC HEAD LIFT+ HEAD LIFT ADAPTER

For base of stand follow the above instructions.

Prior to mounting the head lift adapter, first insert adjuster plates, one per side and loosely secure adjustment plates with supplied, 2 button head screws, 4 washers per, 1 lock nut per side.

Once plates have been installed, insert both ends into the top of the base stand with the head lift. Secure with pivot rod with washer from the outside, then install a washer on the inside of head lift adapter and secure with hitch pin. Repeat procedure for opposite side. After selecting the correct pin size for the motorcycle, place in head lift arm, and secure with quick release pin from either side.



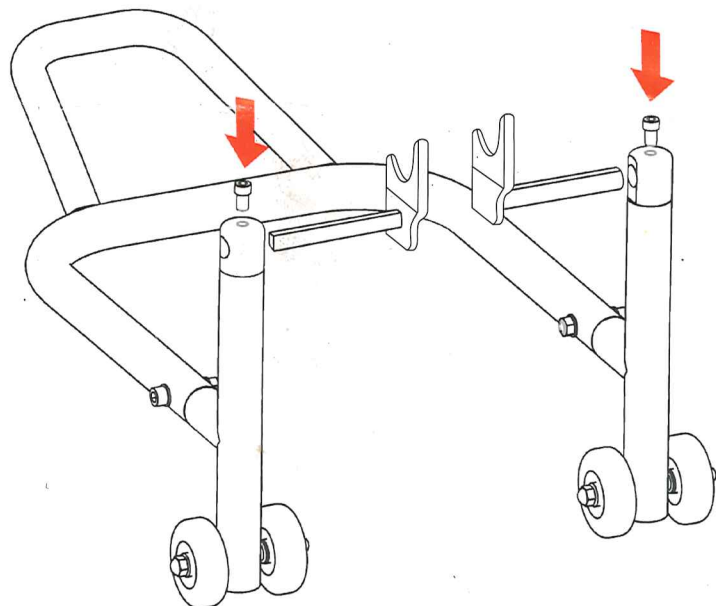
R.SPEC & S.SPEC FRONT + REAR STAND LIFTING HARDWARE GUIDE:

All S.SPEC Rear Stands will be included with universal swing arm adapters. Spool Lift Adapters can be purchased separately.

Depending on swing arm widths, the universal hardware can be installed with spring load on the inside or outside; for both the R.SPEC and S.SPEC rear stands. It is recommended to use the supplied washers on the hitch pin side. The button head screw is for use with Spool Lift Adapter upgrade, but can be used to help secure universal hardware. A tight snug is all that is required. Do not over torque.

All R.SPEC stands will be included with Spool Lift Adapters. Universal Swing Arm Adapters can be purchased separately.

Spool lift Adapters can only be installed one way. Make sure that the taller end of the adapter is pointing towards the front of the motorcycle. Adjust to desired width, and a tight snug of the button head screw is all that is required to secure the hardware in place. Do not over torque.



R.SPEC & S.SPEC FORK LIFT ADAPTER GUIDE:

For leg and wheel assembly please follow the first set of instructions in the beginning of this guide.

R.SPEC Fork Lift Adapters must be installed with the springs on the inside of the stand and most important with the lower of the pads facing forward then secured with the supplied washer on the out side of the stand and hitch pin. Failing to properly set up the adapter may cause instability when lifting from the bottom of the forks.

S.SPEC stands Fork Lift Adapters must be installed in the same fashion with one exception. Due to the narrowness and one piece design of the S.SPEC Fork Lift Stand, the springs must be installed on the outside of the stand then secured with the supplied washer and hitch pin.

Note: All R.SPEC Fork Lift Stands can be converted to a head lift stand by purchasing the R.SPEC Head Lift Adapter Kit, sold separately.

